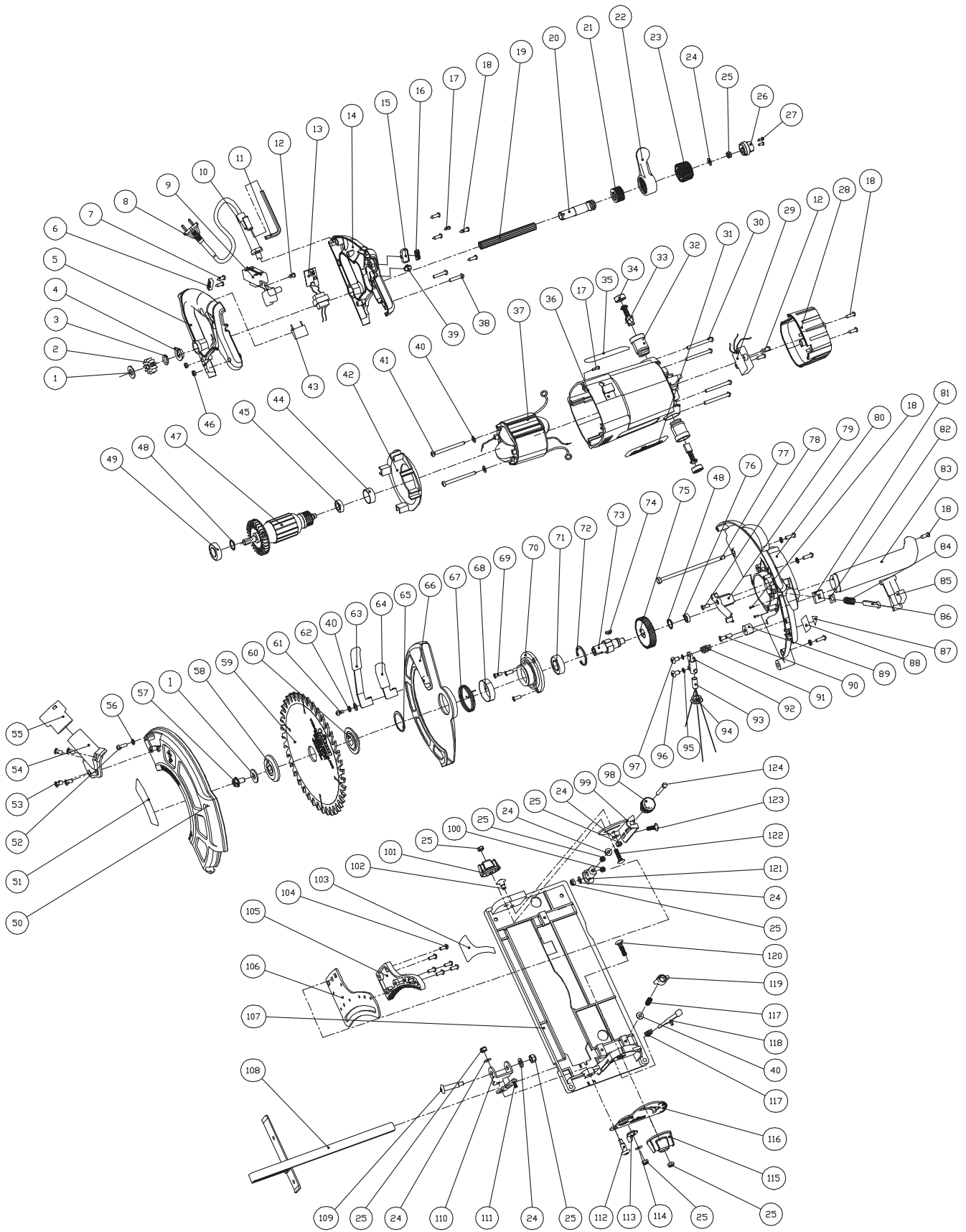


Circular Saw - TA235CSL



Circular Saw - TA235CSL

Diag. Ref.	Part No.	Description	Quantity	Comments
1	TA235CSL001	Flat Washer	1	
2	TA235CSL002	Pinion	1	
3	TA235CSL003	Flat Washer	1	
4	TA235CSL004	Depth Indicator	1	
5	TA235CSL005	Right Handle	1	
6	TA235CSL006	Cordset Clamp	1	
7	TA235CSL007	Screw ST4*14	2	
8	TA235CSL008	Cordset	1	
9	TA235CSL009	Switch	1	
10	TA235CSL010	Cord Protector	1	
11	TA235CSL011	Alan Key	1	
12	TA235CSL012	Screw ST4*10	3	
13	TA235CSL013	Transformer	1	
14	TA235CSL014	Left Handle	1	
15	TA235CSL015	Laser Switch Knob	1	
16	TA235CSL016	Laser Switch Knob Label	1	
17	TA235CSL017	Screw ST2.9*14	2	
18	TA235CSL018	Screw ST4*16	9	
19	TA235CSL019	Spline Shaft	1	
20	TA235CSL020	Depth Lock Shaft	1	
21	TA235CSL021	Depth Lock Pinion	1	
22	TA235CSL022	Depth Lock Lever	1	
23	TA235CSL023	Depth Adjust Knob	1	
24	TA235CSL024	Flat Washer	6	
25	TA235CSL025	Nylon Nut M6	9	
26	TA235CSL026	Depth Adjust Knob Cap	1	
27	TA235CSL027	Screw ST2.9*20	2	
28	TA235CSL028	Motor Housing End Cap	1	
29	TA235CSL029	Soft Start	1	
30	TA235CSL030	Screw M5*65	4	
31	TA235CSL031	Soft Branding Label	1	
32	TA235CSL032	Brush Holder	2	
33	TA235CSL033	Carbon Brush	2	
34	TA235CSL034	Brush Holder Cap	2	
35	TA235CSL035	Rating Label	1	
36	TA235CSL036	Motor Housing	1	
37	TA235CSL037	Field	1	
38	TA235CSL038	Screw M5*28	2	
39	TA235CSL039	Power-on Light Cover	1	
40	TA235CSL040	Flat Washer	4	
41	TA235CSL041	Screw ST4.8*80	2	
42	TA235CSL042	Wind Ring	1	
43	TA235CSL043	Capacitor	1	
44	TA235CSL044	Bearing Sleeve	1	
45	TA235CSL045	Bearing 609-2Z	1	
46	TA235CSL046	Hex Nut M5	2	
47	TA235CSL047	Armature	1	
48	TA235CSL048	Retainer Ring	2	
49	TA235CSL049	Bearing 6002-2Z	1	
50	TA235CSL050	Upper Guard	1	
51	TA235CSL051	Branding Label	1	

Circular Saw - TA235CSL

Diag. Ref.	Part No.	Description	Quantity	Comments
52	TA235CSL052	Screw M5×18	4	
53	TA235CSL053	Screw M5×8	4	
54	TA235CSL054	Dust Port	1	
55	TA235CSL055	Dust Port Adpater	1	
56	TA235CSL056	Spring Washer	4	
57	TA235CSL057	Blade Clamp Screw M10×16	1	
58	TA235CSL058	Out Flange	1	
59	TA235CSL059	Saw Blade	1	
60	TA235CSL060	Inner Flange	1	
61	TA235CSL061	Screw M5×10	1	
62	TA235CSL062	Spring Washer	1	
63	TA235CSL063	Long Moving Guard Lever	1	
64	TA235CSL064	Short Moving Guard Lever	1	
65	TA235CSL065	Retainer Ring	1	
66	TA235CSL066	Moving Guard	1	
67	TA235CSL067	Moving Guard Spring	1	
68	TA235CSL068	Protect Ring	1	
69	TA235CSL069	Screw M5×12	3	
70	TA235CSL070	Gearcase Cover	1	
71	TA235CSL071	Bearing 6003-2Z	1	
72	TA235CSL072	Hole Retainer Ring 35	1	
73	TA235CSL073	Output Spindle	1	
74	TA235CSL074	Semi-Circle Key 4×5×13	1	
75	TA235CSL075	Gear	1	
76	TA235CSL076	Bearing 608-2Z	1	
77	TA235CSL077	Screw Bolt M6×140	1	
78	TA235CSL078	Screw M5×10	1	
79	TA235CSL079	Laser Wire Clamp	1	
80	TA235CSL080	Lower Guard	1	
81	TA235CSL081	Wool plate	1	
82	TA235CSL082	Square Washer	1	
83	TA235CSL083	Front Handle	1	
84	TA235CSL084	Spindle Lock Spring	1	
85	TA235CSL085	Spindle Lock Knob	1	
86	TA235CSL086	Spindle Lock Plate	1	
87	TA235CSL087	Laser Label	1	
88	TA235CSL088	Laser Safety Label	1	
89	TA235CSL089	Moving Guard Stopper	1	
90	TA235CSL090	Screw M6×20	1	
91	TA235CSL091	Laser Adjust Spring	1	
92	TA235CSL092	Laser Holder	1	
93	TA235CSL093	Laser	1	
94	TA235CSL094	Laser Cover	1	
95	TA235CSL095	Flat Washer	2	
96	TA235CSL096	Screw M4×20	1	
97	TA235CSL097	Screw M4×12	1	
98	TA235CSL098	Micro Depth Adjustment Knob	1	
99	TA235CSL099	Rear Bevel Plate	1	
100	TA235CSL100	Hex Nut M6	1	
101	TA235CSL101	Rear Bevel Lock Knob	1	
102	TA235CSL102	Rear Bevel Pivot	1	

Circular Saw - TA235CSL

Diag. Ref.	Part No.	Description	Quantity	Comments
103	TA235CSL103	Depth Label	1	
104	TA235CSL104	Screw M5x8	6	
105	TA235CSL105	Depth Rack	1	
106	TA235CSL106	Depth Adjust Plate	1	
107	TA235CSL107	Base Plate	1	
108	TA235CSL108	Parallel Guide	1	
109	TA235CSL109	Depth Plate Pivot	1	
110	TA235CSL110	Front Bevel Plate Set	1	
111	TA235CSL111	Micro Bevel Adjust Screw	1	
112	TA235CSL112	Front Bevel Pivot	1	
113	TA235CSL113	Micro Bevel Adjust Knob	1	
114	TA235CSL114	Flat Washer 6x9.5x1	1	
115	TA235CSL115	Front Bevel Lock Knob	1	
116	TA235CSL116	Front Bevel Plate	1	
117	TA235CSL117	Spring	2	
118	TA235CSL118	Bevel Lock Pin	1	
119	TA235CSL119	Parallel Guide Lock Screw	1	
120	TA235CSL120	Bolt M6x30	1	
121	TA235CSL121	Micro Depth Adjustment Holder	1	
122	TA235CSL122	Screw M6x25	1	
123	TA235CSL123	Screw M6x18	1	
124	TA235CSL124	Bolt M6x40	1	